

HUMACNORM Extremity System Specifications Sheet

AVAILABLE RESISTANCE MODES:

Continuous Passive Motion (CPM): constant speed, variable resistance, always moving

Isokinetic: constant speed, variable resistance, patient controlled

Isometric: zero speed, variable resistance, patient controlled

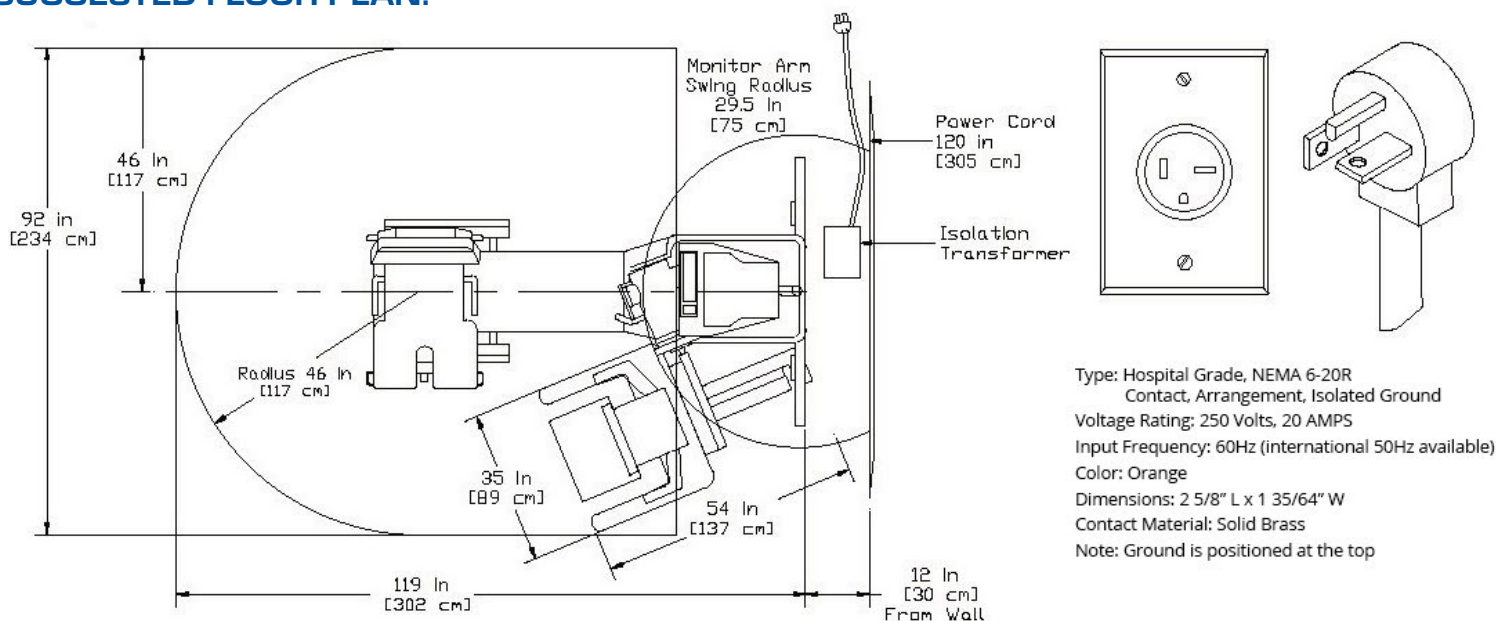
Isotonic: variable speed, fixed resistance, patient controlled

Zero Gravity Mode: Software/dynamometer removes weight of the limb and attachment during test & exercise.

THE DYNAMOMETER

PERFORMANCE	MINIMUM	MAXIMUM
Isokinetic Concentric Speed	1/16 deg/sec	500 ft-lbs / 678 Nm
Isokinetic Eccentric Speed	1/16 deg/sec	500 deg/sec
CPM Speed	1/16 deg/sec	500 deg/sec
Isokinetic Concentric Torque	1/10 ft-lbs	500 ft-lbs / 678 Nm
Isokinetic Eccentric Torque	1/10 ft-lbs	500 ft-lbs / 678 Nm
CPM Torque	1/10 ft-lbs	500 ft-lbs / 678 Nm

SUGGESTED FLOOR PLAN:



COLOR:

Bright White, Winkle Paint Finish
Sun Burst Yellow for moveable attachments
Black Upholstery and Seat Belt

STANDARD TEST AND EXERCISE PATTERNS:

Ankle: Plantar / Dorsiflexion Prone
 Ankle: Plantar / Dorsiflexion Supine
 Ankle: Inversion / Eversion
 Elbow: Extension / Flexion
 Hip: Abduction / Adduction
 Hip: Flexion / Extension
 Hip: Internal / External Rotation
 Knee: Extension / Flexion Seated
 Knee: Extension / Flexion Prone
 Knee: Tibial Internal / External
 Shoulder: Abduction/Adduction

Shoulder: Extension / Flexion
 Shoulder: Horizontal Abduction / Adduction
 Shoulder: Internal / External Rotation in 90° Abduction
 Shoulder: Internal / External Rotation, Mod Standing
 Shoulder: Internal / External Rotation, Mod Seated
 Shoulder: Internal / External Rotation in 90° Flexion
 PNF D1: Flexion - Adduction / Extension - Abduction
 PNF D2: Flexion-Abduction/Extension-Adduction
 Wrist / Forearm: Pronation / Supination
 Wrist: Extension / Flexion
 Wrist: Radial / Ulnar Deviation

OPTIONAL SOFTWARE MODULES:

Research Toolkit - Allows the user finer control of the HUMAC NORM Dynamometer. For example: adjust speed in increments of 1/16 deg-sec.

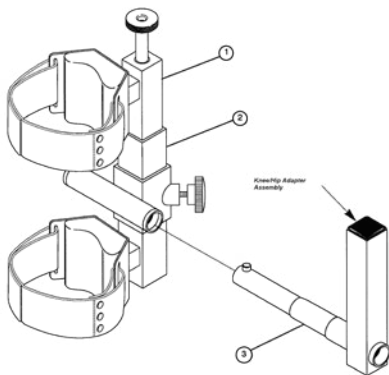
HUMAC EMG Module - Allows the user to stream EMG into the HUMAC Software. Currently compatible with Delsys and Noraxon EMG Systems. Please let us know if you have another brand.

HUMAC E-Stim Module - Allows the user to program the HUMAC Software to control Digitimer or Gras Electrical Simulator.

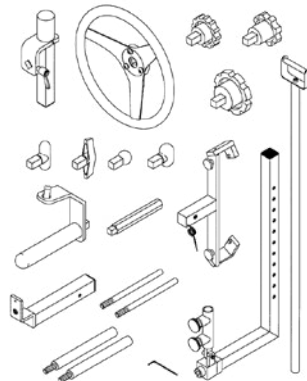


OPTIONAL ATTACHMENTS:

JOHNSON ANTI-SHEAR (JAS)



WORK SIMULATION TOOLS



WHEEL



CLOSED KINETIC CHAIN (CKC)



TRUNK MODULAR COMPONENT (TMC)

